

3rd

Annual Service-Learning  
& the Arts Conference

# Arts, Culture, & Community: A Service-Learning Approach



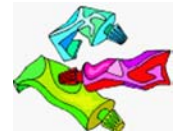
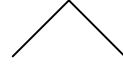
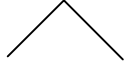
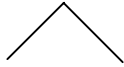
Sarasota, Florida • February 3-5 2005



RINGLING SCHOOL  
OF ART AND DESIGN

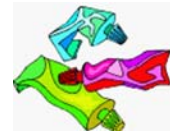
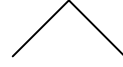
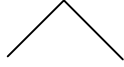
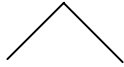
The John and Mable  
Ringling Museum  
of Art





## Table of Contents

Conference Credits	2
Welcome	3
Evaluation Responses	4
Keynote Speakers	16
Appendix I	Agenda-At-A-Glance
Appendix II	Conference Presenters and Session Topics
Appendix III	Conference Participants
Appendix IV	Participant Reflection Poems



Florida Learn & Serve, Florida Campus Compact, and Title IV Community Service Grants acknowledge the following conference hosts and staff members for their dedicated work in planning and executing this conference:

### **Hosts**

The Ringling School of Art & Design

The John and Mable Ringling Museum of Art

### **Staff**

Tammy Brushwood

Min Cho – Co-Chair

Joe Follman

Paula Gray

Meg Jackson

April Lupo – Co-Chair

Melissa Moon

Jonelle Prill

DeeDee Rasmussen

Lynn Taff

A.J. Kleinheksel

### **Program Support**

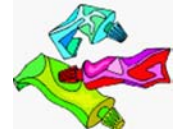
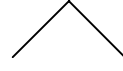
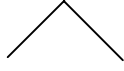
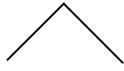
The Florida Department of Education along with Florida Campus Compact through its congressionally directed FIPSE grant, primarily funded this conference. Additional support was provided by Florida State University, and the use of facilities at Ringling School of Art and Design and the Ringling Museum.

### **Special Thanks**

The conference opening and closing sessions were designed and conducted by guest facilitators Susan Agre-Kippenhan (Portland State University) and Sonia Manjon (California College of the Arts).

Great appreciation is given to Dr. McRorie, Dean, Visual Arts & Dance, Florida State University, for assistance in promoting the conference and securing the Ringling Museum of Art for the opening dinner and to Dr. Thompson, President of Ringling Schools of Art and Design for hosting this conference on his campus.

Evaluation supplement compiled by Ashley Blackmon.



Dear Friends,

Welcome to Sarasota and the 3rd Annual Service Learning & the Arts Conference. Several partners of the Florida Alliance for Student Service are excited to collaborate with The John and Mable Ringling Museum of Art and The Ringling School of Art & Design to provide the workshops, trainings, and networking opportunities in which you are about to participate. Local-, state-, and national-level experts are here to share their experiences and insights to help you construct your ideas, promote your efforts, and expand your projects.

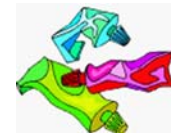
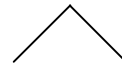
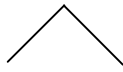
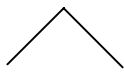
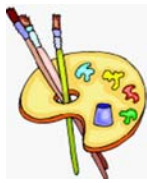
For the past two years, the Service-Learning & the Arts Conference had been targeted towards the K-12 audience. This year, with the interest and commitment of our partners, our vision has expanded to include fellow colleagues at the higher education level. Our conference theme, “Arts, Culture, and Community: A Service-Learning Approach,” promotes the hope that all arts, all cultures, and all communities in the academic and non-profit sector may one day share in a vision of service-learning through civic engagement.

We invite you to participate and reflect in as many sessions as you can attend. Our outstanding workshops will take you through a journey of philosophical dialogue, applied research, and practical applications. We look forward to spending the next few days with you in creative exploration.

Sincerely,

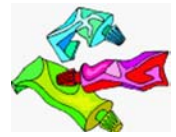
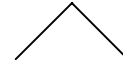
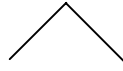
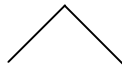
*Min*

Min Cho  
Associate Director, Florida Learn & Serve



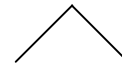
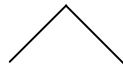
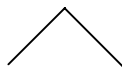
## 1. What have you learned from this conference?

- The importance of collaboration/communication between all product partners
- To take my community service project and make it into a service learning project
- Teach my students to use their multiple intelligences
- I learned what service learning is
- How service learning works, ideas for service learning, and service learning and multiple intelligences
- The meaning of service learning and many applications
- The need to understanding the goals/needs and resources/assets of each partner
- Service learning is needed-an opportunity to give kids hands-on experiences in all academic areas
- Organizational support for service learning is very important to a sustainable and meaningful program
- Grant tips, reflection tools utilizing multiple intelligence, copy write laws regarding musical theater
- How to establish a true connection between academics and service
- FIU ARC project at the Palace, quilting using one subject, it's cold in Sarasota
- What and how service learning works
- Different ways to get students involved on community projects in the arts
- Reflection techniques utilizing service learning
- Bows can teach fun, lots of things, art has many possibilities (Social Studies)
- The value of strong community based organization partnerships
- A variety of reflection strategies, asset building
- The importance of a positive approach to community service
- Additional areas to address during the "How to" of a service learning project
- Doing the conference has built stronger relationships with my own colleagues
- Service learning done correct is win/win
- Filmmaking from real-life experience can be recognized
- There is excellent service learning work being done in the Miami-Dade County area that incorporates art and community
- More of an understanding about K-20 continual service learning, concerns of K-12 focus
- About programs in the arts and new ways to see them
- The status of where museums are in service learning
- It's cold in Florida in February, but the arts can warm us up
- Most artists are ignorant of basic business concepts; how to get grants-publicity-marketing-figuring costs-sustainability
- More about the Ringling products and Sarasota, more about service learning through the 101 with Dee Dee, all the K-12 initiatives (interesting since I am in Higher Ed)
- I have for years been using service learning projects to enhance course instruction
- The definition of service learning, components necessary or successful S-L projects, reflection is necessary for learning, I'm on the right thinking track-just need to implement
- Language is tricky, language is crucial, presentation needs to be more muscular
- Stacy and Beth will go anywhere
- What service learning activities are and their importance in learning



- More about tools for reflection, multiple intelligences in the classroom, how OCSF and Center for Public Life are very similar
- Concept of service learning of which I had no prior knowledge
- How to broaden my focus of subject matter that is being taught
- Service learning has been in practice in highly refined and thoughtful manners in many institutions
- The arts are a perfect venue for service learning
- How to use various forms of art in S/L projects
- Service learning is a neat concept for me; I know what it is and that it can be valuable within the academic classroom
- The whole concept of service learning
- Reflection! Reflection! Reflection! Service is highly needed!
- A variety of ways and levels that service learning is done
- I learned possible ways to bring in pre-service teachers from our local university into my service learning project
- How wide spread service learning is
- Basic information in 101; sites/books helpful; creative writing, book, ideas; SL ideas
- That students can find themselves through arts service learning projects
- The core spirit of “service learning” is “humanism”
- Our job is to help students find their voices; We serve by working with a person’s assets, not his problems
- Multiple intelligence, reach them all in reflection; friends make it happen; teamwork
- I can use my creativity to connect previously unrelated aspects of my work and life
- Postcard art exchange program; the connection between making murals and service learning; the Ringling’s wonderful Reuben’s
- How to be a better listener; who I can work with at FGCU; how to use a Youth Council

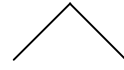
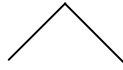
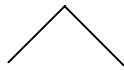
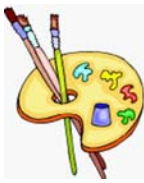




## 2. What will you use in the future?

- Contacts
- Practicing service learning in my community
- The “empty bowls” activity
- Reflection ideas within the multiple intelligence
- Talk to educational institutions about partnering
- Energy, enthusiasm to being bridging the gap between businesses and K-3 children
- I will take back meaningful programming and try to implement
- The process for developing or helping students develop service learning projects
- Ideas to redesign curriculum based on multiple intelligence
- Partnership with ARC; \$45; hope for future funding
- Ideas I’ve had shared with me
- Partnerships with a university in a project with senior citizens
- Tools to engage students
- Democracy in Art interdisciplinary project
- Affiliation with veterans groups; an idea another attendee put forth
- Bowden’s page on reflection; Hatzel’s asset building experiences
- Making our community service program more aligned with our curriculum
- Using hands on project material during workshops
- The Gardner M.I. test forms; ideas related to ways to build service learning; service learning opportunities
- Listening to the need of the community before committing to a project
- Use more intelligences in reflection
- Taking back contacts for further engagement and the quilting experience
- Session information that emphasizes impact, continuum, and production; the learning process is ongoing and communal
- Great work on the American Democracy Project
- Contacts and new knowledge of possibilities
- Contacts that I have made in Florida for possible collaboration
- Enthusiasm of the flutist for art and living/teaching artfully; loved energy and literary quotes
- Grant opportunities for Serve and Learn
- Event ideas and Service Learning projects; I will look at the other courses to be developed into service learning
- Ideas for networking older students with younger students; great foundation and research knowledge
- To use data analysis wisely and with vigor
- An expansion of service learning projects at my school
- Empty bowl activity, other activities using the service learning approach
- The sharing of tools and activities with UM partners and school teams
- Ideas for implementing this concept; also meeting people and sharing their ideas
- The knowledge and ideas I gained from the “Heroes Jamey” workshop and grant development

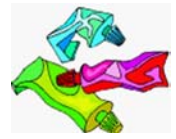
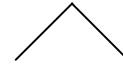
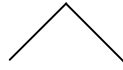
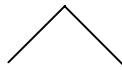




- A greater ability to explain service learning
- Information from grants, fundraising, multiple intelligence workshops, and community involvement
- The “portable cathedral” idea for reflection
- Enthusiasm for service learning and practical ways to incorporate it
- The concept of “Service” into my community
- Service-civic duty to all!
- Specific feedback about how museums need to approach service learning
- A shift yet again in my perspective on service learning...paradigm shift
- Visual communication and its impact
- Basic plan to begin investigating possibility of participating in Service Learning
- Wissinger’s Heroes journey projects and ideas; postcard pen pals
- Paying attention to collaboration with K-12 design
- Creative writing and expression-stories
- Reflection for ALL
- Specific ideas and methods for building stronger partnerships for arts education
- Post card idea
- Gardner’s Multiple Intelligence with Reflection

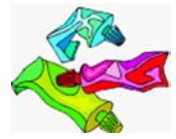
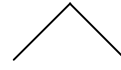
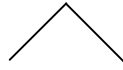
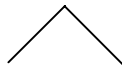






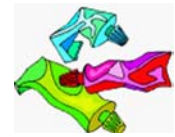
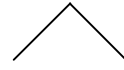
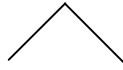
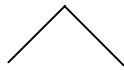
### 3. What was the best session you attended?

- Triangular-very well organized, many ideas, evident knowledge on subject by presenters
- All presentation were exceptional, but the multiple intelligence workshop was informative, fast-paced; second were the ladies from Miami and their great work with troubled teens
- OCAP/Columbia College
- Intro to Service Learning: Joe and Dee Dee; Empty Bowls; Multiple Intelligences; Women from Homestead
- Multiple Intelligence; Empty Bowls
- Empty Bowls
- Murals and Asset based Service Learning
- Multiple Intelligences
- OCAP Columbia College
- Empty Bowls-it showed the process of developing a project and carrying it through, plus it was hands on
- Empty Bowls
- ARC-applied to our program-opened an avenue for partnerships
- Empty Bowls & Multiple Intelligence-hands on
- FIU and seniors Art Reading Community
- Multiple Intelligences; FL Gulf Coast Projects
- Empty Bowl presentation was energizing, interesting and seemed easy to implement
- Chicago Group!!! -They were organized and had an incredible resource unit
- Bowden & Hatzel-the way the quilt was designed and utilized as a networking tool at the end
- Service Learning 101 was an excellent introduction to the concept. Excellent energetic and entertaining presenter
- Service Learning 101-picked up new ideas
- Grant Writing-very succinct; FL Gulf Coast Univ-the presenters each had multiple areas of strength and their programs being incorporated from the beginning of the school was an interesting viewpoint
- Bowden; Flautist-touched the soul with both poetry and music; Grant writing-well organized; Empty Bowls
- MacArther's presentation-it incorporated examples, history artwork and opportunity to engage
- The Heroes Session-invigorating; the movie posters presentation; all sessions were very informative
- Serving Art at the Soup Kitchen
- Mural Art-good examples of projects; information on how-to; theoretical tie-in and historical background
- Service Learning in Museums
- Iranian filmmaker-straight from the heart; Heroes Journey
- Empty Bowls-hands-on, energizing
- Key Note address by Glenda Hood; the 101-to get me up to speed
- S-L 101-basics and foundation; middle School Theater; Triangular Relationships



- Asset-based Service Learning-only the first half, second half about School of Arts in Cincinnati was in opposition to first half of presentation
- Empty Bowls
- 101 Service Learning; Empty Bowls (both of these were practical and can be applied to the younger grades)
- Sonia Manjon-gave examples of partnerships and building blocks for a story center found
- 101 Service Learning
- "Heroes Journey"-I could relate, it was interactive, and informative. Very organized and inspirational. Just excellent!
- Philosophy of Learning; all were useful
- Multiple Intelligence; Ringling Museum, Empty Bowls
- Mural Presentation
- Multiple Intelligences and reflection
- Howard-highly motivated! Bowl-great! Tehan-drama!
- Service learning Philosophy; Asset based Service Learning
- Columbia College in Chicago opened a world of possibilities.
- Reciprocity was my favorite because the group shared honestly6 and openly the steps that they have taken to cultivate and naturally let grow into service learning
- Serving Art in the Soup Kitchen; Triangular Relationships; Service Learning 101
- Empty Bowls and Heroes Journey
- Philosophy for Service Learning-very useful for me
- Donna Wissinger-so creative, so useful for working with trouble teens; Terry Thaxton-creative prompts-good for working with at-risk students
- Flautist and Secretary of State Hood
- All the presentations I attended were quite good
- Lunch-keynote speaker; ARC-Miami University-great ideas and action
- Ringling was a good speaker; awesome and ways to connect resource with schools and students

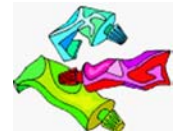
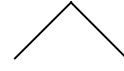
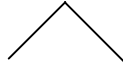
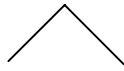




#### 4. How might the venue be improved?

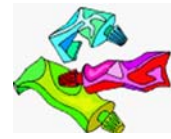
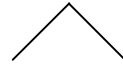
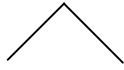
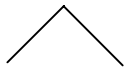
- None-first conference and exceeded expectations
- Excellent-Can't think of any way to improve
- More time allotted for tours threw museums and mansion
- No suggestions
- No recommendations
- Coffee at opening session
- Fantastic-no better place
- Great location but hotel is too far from it
- Closer to hotel venue-more sessions built around time needed per session
- Venue was perfect
- None
- Keys for the next one
- Keys, FL or NYC
- Interesting and new for me; Miami or Key West
- Miami maybe-somewhere with museum gallery events planned with shuttles in the evening
- Superb-first evening was magical
- Closer to hotels or hotels closer to venue
- Facilities closer together
- Good location; slightly more contact with host institution
- Great
- Conference could have been more comfortable in a hotel with breakout rooms
- Closer to hotel
- Excellent-inclusion of the museum for more details viewing of Ringling
- Venue is fine-loved the Ringling
- Great venue-better signage
- Tours of community partner sites
- Very nice-being spread out was a minus due to weather
- Should have included performing arts-unbelievable theater is available in this area
- Better signage; get hotels closer to schools
- Community center where service learning takes place
- Hotel was too far away
- Classes easier to locate/maybe have in one building-too much walking
- Increase hands on activities
- Have venue more centrally located to all lodging for conference
- All excellent
- Great-don't change it
- Stay in one hotel
- Awesome
- Bottled water-otherwise this worked well for me
- Perfect-my suggestion is to come back to Ringling again next year
- Temperature regulation in rooms





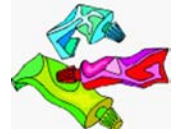
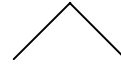
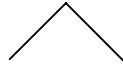
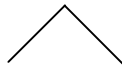
- Rooms too cold; loved everything else
- Loved it
- Targeting
- Lovely venue-find all hotels that are closer to it; bit chilly in rooms
- Beautiful-improved from other years
- Fine-it would always be great for lodging and conference activities to be within walking distance
- Water in all lecture rooms; rooms closer together so you can move from lecture to lecture
- Loved the venue
- It worked reasonably well; hotels within walking distance would be nice





## 5. Any additional topics for sessions?

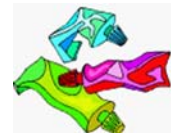
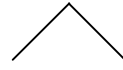
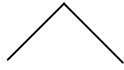
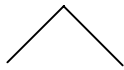
- More information on successful SL/Art projects in Higher Education
- Being new to Service Learning-everything was super
- Project ideas and use in the class and community
- Focus on service learning projects specifically for young elementary students
- Adapting service learning into primary grades
- How to become part of a civic dialogue and role in fostering communication in a larger community
- More teaching for younger students
- More theory and research
- A session allotted for brainstorming
- Evaluation tools for arts projects
- Funding sources for specific projects
- Brainstorming ideas for service learning
- Fundraising-approach to future donors or sources of funding
- Tangible ideas, projects, experiences rather than theory
- Interdisciplinary topics, more culture vs. art topics
- Art History was under represented
- I would volunteer to create conferences
- A topic geared more specifically to service learning and performing artists
- Curriculum connection
- The politics on the buy-in
- Funding agencies and grants
- More on community art collaborations, Art for Civic Engagement
- SL from a community perspective
- Service learning correlated to curriculum
- How to develop events
- Linking with professional arts organizations
- More community based perspective please-organizational and cultural diversity
- More directed toward younger children
- More sessions for primary grades
- Involve actual principals or museum people to demonstrate service learning
- Cultural competency, not all just arts
- Go over grant items
- General overview of establishing university K-12 partnerships
- Correlation of curriculum standards in service components
- Sustainability issues
- Service learning in the middle schools
- Learn and Serve Beyond 101
- Better opening session
- Team building
- More information on service learning in higher education



## 6. What could be done better?

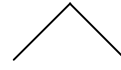
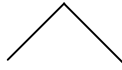
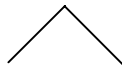
- Clarify program descriptions
- Longer time touring the museum
- List of good local restaurants and “happening” things
- Add a day so we have more time to reflect between sessions
- Busses too early; closer location of hotels may have helped; longer conference
- Longer time in the museum
- Limit workshops to 3 rather than 5
- Have an opportunity to discuss on a round table setting for sharing
- Everyone in the same hotel; on site on closer; shorter sessions and exposure to more ideas
- Run fewer session concurrently and make sessions shorter/tighter
- Start an hour later-can’t get to bus at 7 am
- Provide some student presentations
- More presentations that target specific media, mediums
- Think carefully about the combination of K-12 and higher ed
- Broader scope beyond schools
- More displays of projects; make sure museum exhibit (i.e. Ansel Adams) is indeed unlocked and available to tour
- Less on theory and more on practical projects
- I liked the bus transportation but I felt stuck
- Selected site visits to CBO’s
- More sessions directed toward younger children and service; keep food and water in the “main” room
- Don’t make presenters pay for registration; site visits to CBO
- Have more sessions or more days; equates to more information
- More hands on, longer time for workshops
- Have the motel closer
- Shorter session times
- Have the dinner on Friday night. Many of us work in K-12 schools and can’t get away
- Could there be a repeat of some of the sessions? I had to choose between some sessions, especially on Friday, that I really wanted to attend.
- Session offerings for Friday. There was more than one that I wanted to attend.
- The location was not that convenient for walking around
- Preview all presenters and maybe have the conference on Thursday and Friday, not Saturday
- More of an introduction to Who’s Who-staff, presenters, participants
- Less presenters so more lectures are full; shorter lecture times to see more sessions; have an in town gallery walk





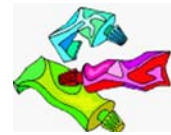
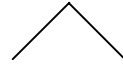
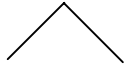
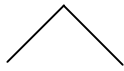
**7. What would you title our collective quilt piece?**

- “Layers”
- Intertwining Ideas
- Visualizing Your Service to the Community
- Our Quilt of Feelings
- Creative Community Quilting
- One Conference-Many Ideas
- Collective Conscience or Spirited Possibilities
- We are all in it together or The World is Service
- The Art of Possibility
- Individuals Serve the Whole
- Threads of Diversity-A Common Goal
- Separate but Equal
- Service Learning Covers All
- Visual Poetry
- Learn & Serve Through Quilts
- The Many Shades of Service
- Quilt of Who We Are
- Participant Talent
- Do not Do it Again
- The Fiber that Holds Service Learning Together
- Many Made One or Personalities in Living Color
- In Life Together
- A Community of Learning and Service; “Haranbee”
- Learning Quilt
- Arts Weaving Hearts
- Instant Art: Just Add Water
- The Garden Grows
- Tying it Together
- Pieces of Service Learning or A Sum of Squares
- Service Learning Together We Can!
- Hand of the Aesthete
- Pieces of Character
- Mosaic
- Together Doing or A Step to Creativity Service
- Colors of Success
- Compact...as in Promise
- United Variety
- Be Here, Be Have, Be Learning
- Many ideas-one focus-Service Learning
- Quilt Fantasia
- Making Art With and For the Worldwide Community
- Putting the Pieces Together



- Quilting Together the Pieces of Service Learning
- Through our Eyes-The Quilt of Art Educators
- Bright Expression
- Reflection of Service
- Building Creative Communities
- 1 Piece can make a difference in the whole-The whole can't work without 1 piece
- Show What You Know-Show Who You Are or Making Friends





### ***Thursday Evening***

*Madame Secretary Hood* was appointed by Governor Jeb Bush to become the Secretary of State effective February 2003. As Secretary of State she is responsible for the Department's Division of Administrative Services, Division of Corporations, Division of Cultural Affairs, Division of Elections, Division of Historical Resources, and the Division of Library and Information Services. In addition, the Secretary of State is Florida's chief elections officer and chief cultural officer. Prior to her appointment as Secretary of State, Glenda Hood was elected the first female Mayor of the City of Orlando in 1992 and served three terms. In April 2002, President Bush commended Hood for establishing a Citizen Corps, a new initiative that creates opportunities for individuals to volunteer for disaster preparedness programs in their communities.

*Donna Wissinger* has been hailed as a dynamic international star whose concerts include acclaimed recitals on the mainstages of Carnegie Hall and the renowned Glinka Capella, recital tours of Europe and the USA, and a highly successful tour throughout several republics of the former Soviet Union. As principal artist of Creative Leaps International, Ms. Wissinger was a featured keynote speaker at the 2002 Excellence in Government Conference in Washington, DC, the International Art and Business Conference Idriart in Slovenia, the ACE/FAAE Summer Leadership Conference in Florida, and the VSA Arts of Florida Leadership Conference. Miss Wissinger is a leader in the Youth Development Through the Arts movement nationally and is co-author of the ACE/FAAE Florida Model Program Tool Kit for artists and educators.

*Lynn Berkowitz* is the Education Director at the John and Mable Ringling Museum of Art and the former Curator of Education at the University of Arizona Museum of Art, Director of Education at the Tucson Museum of Art and the Allentown Art Museum in Pennsylvania. Lynn has initiated nationally recognized museum education programs for adults, families, and seniors and established and strengthened outreach and strategic school-based initiatives. She is an active participant in the local art scene and is on the Sarasota County Arts Council Arts Education Taskforce. Lynn received her M.F.A. from the Tyler School of Art of Temple University in Philadelphia. She has presented at numerous symposia and received the Pennsylvania Art Education Association 2001 Outstanding Museum Educator Award.

### ***Friday Opening Session***

*Larry Thompson* became the sixth President of Ringling School of Art and Design in Sarasota, Florida in 1999. Prior to coming to Ringling, Thompson was the first President and Chief Executive Officer of the Flint Cultural Center (Flint, Michigan), the Director and Chief Executive Officer for the Rock and Roll Hall of Fame and Museum in Cleveland, Ohio, and the Special Assistant to the President of The Ohio State University. He received his Juris Doctorate summa cum laude from The Ohio State University and practiced law for a number of years with a large firm in Columbus. Thompson has a Master of Science in educational administration and counseling from California State University Los Angeles. He was an adjunct professor at the University of Michigan-Flint in the Honors department and taught as an adjunct professor in the College of Law at Ohio State for six years.





### ***Friday Lunch***

*Yassamin Maleknasr*, born in Tehran, is a graduate of filmmaking from University of Southern California (USC) and did post-graduate work in Drama at Towson State University in Maryland. She made her first short film, "Jazz Ballet in the U.S.," and after several years working at American film companies, she returned to Tehran to perform in "Dariush Mehrjui's film Sara" (1993) for which she won a Best Supporting Actress Award from the Fajr film festival of Tehran. She has also acted in a number of other Iranian features. Maleknasr directed her debut feature film, "The Common Plight in 1995," and has made several documentaries including "Bababaghi," which documents the lives of lepers and their families living in the outskirts of Tabriz, and Iran through Foreign Eyes, in which foreign-born women express their views on life in Iranian society.

**APPENDIX 1**  
**Agenda-At-a-Glance**

<b>DAY 1</b>	<b>Thursday, February 3, 2005</b> <b>The John and Mable Ringling Museum</b>
5:40 PM	Dinner
6:20 PM	Welcome & Keynote Speaker(s)
7:15 PM	Tour of Ringling North and South Galleries
8:30 PM	Adjourn

<b>DAY 2</b>	<b>Friday, February 4, 2005</b> <b>Ringling School of Art &amp; Design</b>
7:45 - 8:30 AM	Breakfast
7:45 - 10:00 AM	Registration
8:30 - 10:00 AM	Welcome by Ringling President & Opening Plenary
10:00 - 10:15 AM	Break
10:15 - 11:45 AM	Session I
11:45 - 12:45 PM	Lunch
12:45 - 1:30 PM	Keynote Speaker
1:30 - 1:45 PM	Break
1:45 - 3:15 PM	Session II
3:15 - 3:30 PM	Break
3:30 - 5:00 PM	Session III
5:30 PM	Busses Depart for St. Armand's Key (Optional)

<b>DAY 3</b>	<b>Saturday, February 5, 2005</b> <b>Ringling School of Art &amp; Design</b>
7:45 - 8:30 AM	Breakfast
8:30 - 10:00 AM	Session IV
10:00 - 10:15 AM	Break
10:15 - 11:30 AM	Closing Session V
11:30 - 12:00 PM	Concluding remarks and evaluation

## APPENDIX II

### Conference Presenters and Session Topics

**Susan Agre-Kippenhan**, Professor of Graphic Design and the Chair of the Art Department at Portland State University, focuses on Service Learning in the arts and the role of faculty in an engaged institution. Her most recent publications include a chapter in the forthcoming book *Serving and Learning: A Student Workbook for Community-Based Experiences across the Disciplines*, from Stylus Publications and inclusion in *Teaching Graphic Design: Course Offerings and Class Projects from the Leading Graduate and Undergraduate Programs* by Steven Heller. Susan received her MFA from the School of the Art Institute of Chicago in Visual Communication. She received the Portland State University Community Scholar Award in 1997 for outstanding work linking curriculum and community issues and is a founding board member of the National Review Board for the Scholarship of Engagement.

***Session Topic: Philosophy Behind Service-Learning***

**Tonya Borgeson** is an instructor at Lake Superior College in Duluth, Minn., and recently founded Snoodle Ceramics, a community-based ceramics studio. She has integrated service learning into her curriculum and her graduate thesis research was based on community engagement and the history of the arts within the community. Tonya has actively participated in several large community-based art events and has created over 40 pieces of artwork, including ceramics, metal, video, and drawings. Currently, she is developing connections in Duluth among artists and local groups to bring about civic engagement through the arts.

**Session Topic: Awaken Your Consciousness**

**Howard Bowden** is a service-learning consultant and serves as a Regional Advisor with the National Service-Learning Exchange. He has more than 30 years in leadership positions with in-depth, hands-on experience in training, management, and counseling. He has served as a Program Manager with AmeriCorps, an adjunct staff member at Berea College (KY), and a high school guidance counselor. Howard is a sought after conference presenter and trainer.

***Session Topic: Multiple Intelligences***

**Nicole Crane**, originally from Norfolk, Virginia, received her BA in photography from Virginia Intermont College, an MA in Art Education at Florida State University, and is currently pursuing a Ph.D. at Florida State University. She previously taught elementary art K-5 for six years in Quincy, Florida at Stewart Street Elementary and received her National Board Certification in Early Childhood Art Education in 2004. She is currently the Associate Curator of Education of Scholastic Programs at the Ringling Museum of Art.

**Session Topic: Service at the Ringling Museum**

**Timothy Densmore** has been an independent television producer, director, and consultant for over 15 years. His lists of clients includes the Hilton Corporation, Allstate, and the Illinois Institute for Continuing Legal Education. Tim has produced numerous community-based non-for-profit programs and exhibitions. Including on-going media activists work with Street-Level Youth media, The Cambodian Association of Illinois, and several other Chicago-based organizations.



Session Topic: Reciprocity - Campus & Community Partnerships

**Patricia Fay** holds an MFA in Ceramics from the University of Massachusetts, and a BA in History and Fine Art from the College of William and Mary. Prior to her teaching career, Fay was a full-time production potter marketing her work nationally through such venues as ACC Baltimore and the Smithsonian Craft Show. She later became a Fulbright Scholar Grant recipient for research on African-based ceramic traditions. Fay lived in St. Lucia from 1994-1996, and has traveled extensively throughout the Caribbean documenting pottery production with additional research trips to West Africa and South America.

Session Topic: Art and Engagement – Developing a Service-Based Approach

**Anna Cristina Fernandez** is an Honors student at Florida International University, pursuing a double major in fine arts and nursing. Her interests focus on social justice issues and have resulted in the creation of a service-learning project called Art Reaching Community. She is currently investigating ways of integrating health and art into a holistic, fluid body of work that emphasizes art as a compassionate and creative outreach to underserved areas of the community. Ms. Fernandez is a Rotary Ambassadorial Scholar, and expects to continue to study art and nursing while serving in India during the academic year of 2005-06.

Session Topic: Art Reaching Community

**Joe Follman** co-directs the Florida Alliance for Student Service (FASS) based at Florida State University. FASS includes Florida's Campus Compact, a statewide VISTA program, Florida Learn & Serve, the Community/Higher Education/School Partnership, and Title IV Community Service Grants. The programs support K-high education student involvement in service learning, and each year over 200 schools and 50,000 students participate. He has worked in youth service since 1990, and he has authored and co-authored eight books on education and/or service learning.

***Session Topic: Service Learning 101 for K-HE***

**Daniel Garcia** comes from a family of traditional Cuban woodcarvers. A resident of Miami's Art South, his subjects include many images of South Florida, especially historic Miami. Daniel has been a part of numerous festivals and events engaging community members in his "Interactive Art" method of encouraging citizens to sign a wood carving until the piece is completely covered. He specializes in corporate accounts, portraits, skylines, and landmarks.  
Session Topic: Pupils' Perceptions – An Alternative High School Community Outreach Partnership

**Beatriz Herrmann** is originally from La Paz, Bolivia. She moved to the United States in 1970 and to Florida in 1987. For the past three years, Beatriz has been the Executive Secretary and Community Liaison for Board Member, Marta Perez. Currently, she is the Community Liaison at Douglas MacArthur High School South. Beatriz has recruited Math and Reading volunteer tutors from Florida International University and the University of Miami. She is an integral force in Pupils' Perceptions. She has acquired numerous funding sources for the ArtSouth program and coordinates and organizes art exhibits throughout Miami-Dade County.

***Session Topic: Pupils' Perceptions – An Alternative High School Community Outreach Partnership***

**Dr. Robert Hogner** is Associate Professor of Business Environment, College of Business Administration, and Director of Community Service Learning, Honors College, at Florida International University, Miami, Florida. He plays an active role in congregation-based community organizing, having worked for seventeen years with Direct Actions and Research Training, Inc., a Miami-based national center focused on empowering communities. His research interests have most recently focused on the development of national and trans-national systems using "public disclosure" as a tool for lowering toxic chemical usage and emissions.

Session Topic: Art Reaching Community

**Youngbok Hong** is an Assistant Professor of Visual Communication at the Herron School of Art at Indiana University-Purdue University Indianapolis (IUPUI). Previously, she was a design educator at University of Arizona & the School of the Art Institute of Chicago. Employed by Samsung Electronics in Seoul, Youngbok worked in various units of the organization including marketing and the IDS innovation design center. Youngbok has received awards for educational CD-ROM design and website development from several organizations. Her work focuses on interactive narrative and visual information architecture across various platforms. Youngbok graduated from Ewha Womans University with a BA (1993) in Philosophy and from the School of the Art Institute of Chicago with a MFA (2001) in Visual Communication.

Session Topic: Visual Journalism – Design Writing on American Democracy

**Karen Hutzel** currently directs the development of a community arts curriculum in an arts magnet school in Cincinnati while pursuing a Ph.D. in Art Education at Florida State University. As an AmeriCorps\*VISTA, she worked with a school in Monroe County to enhance service-learning integration.

Session Topic: Asset-Based Service-Learning

**Cheryl Kessler** is a Research Associate at the Institute for Learning Innovation, a not-for-profit evaluation and research organization in Annapolis, Maryland. She holds a Bachelor's degree in Anthropology from the University of California at Davis and a Master's degree in Museum Studies from John F. Kennedy University in Berkeley, California. Cheryl's work with the Institute has ranged from exhibition evaluation at the Buffalo Museum of Science and the Austin Children's Museum to teen environmental education program evaluation with the Alice Ferguson Foundation's Bridging the Watershed project and Franklin Institute Science Museum. Her research interests focus on the role that community and other types of service play in lifelong learning.

Session Topic: Service-Learning in Museums – Examples and Evaluation

**Janis Klein-Young** has been a Visual Arts instructor for 30 years at Miami Douglas MacArthur Senior High South, MacArthur. She holds National Board Certification in Early Adolescence through Young Adult Art. In 2002, Janis represented Miami-Dade County Public Schools as the District Teacher of the Year and has been a 2002 and 2003 finalist for The National Teachers Hall of Fame. She is the originator and director of Pupil's Perceptions, a community arts outreach

program designed to simultaneously stimulate student achievement and while providing service in the community

***Session Topic: Pupils' Perceptions – An Alternative High School Community Outreach Partnership***

**Dr. Sonia BasSheva Manjon** holds several positions at the California College of the Arts including Director of the Center for Art and Public Life, Chair of a new BFA major in Community Arts, Chair of the Diversity Studies Program, Vice Chair of Campus Wide Diversity Initiative, Faculty in Humanities and Science, and a Commissioner on the Alameda County Arts Education Leadership Alliance. Sonia has a Ph.D. in Humanities, Transformative Learning and Change in Human Systems and a MA in Cultural Anthropology and Social Transformation from the California Institute of Integral Studies. Her research focuses on marginalized and invisible immigrant communities.

Session Topic: The Center for Art and Public Life – An Intersection of Art, Education, and Community

**Tabitha Matthews** is the Program Coordinator of Community Partnerships in the Office of Community Arts Partnership (OCAP) at Columbia College Chicago. Before joining the team at OCAP, she was a full-time teacher at Perspectives Charter School, where she developed and taught a speech/theater curriculum for junior high and high school students. She also worked as a teacher artist for G.E.A.R UP. (Gaining Early Awareness and Readiness for Undergraduate Programs), at ACT Charter School and summer workshops at Columbia College Chicago.

Session Topic: Reciprocity – Campus & Community Partnerships

**Cheryl McLean** has been a visual arts instructor at South Lake High School for the past 27 years. For eight of those ten years, Cheryl has been involved with community service and service-learning with a strong focus on "empty bowls" project. Other service-learning projects include school, community, and local government preservations/designs/promotions. She is an active participant in local art programs and festivals. Cheryl is currently a member of the following organizations; Lake County Art Education Association, Florida Art Education Association, and National Art Education Association. She was also a Disney Teacherific recipient with fellow service learning teachers in 2000.

Session Topic: Empty Bowls Project

**Megan C. McShane** received her Ph.D. from Emory University in Art History. Her research on Surrealist drawings received the President's Award for Writing on Women's Issues. Her interests include French art of the inter-war period. While at Emory, she held a fellowship in the Violence Studies Program for her work on art and World War I. At FGCU, she is working with The Center for Environmental and Sustainability Education to further her work on the art and ecology movement. She has taught African Art at Spelman College and is currently engaged in analyzing pedagogical issues in South African contemporary art.

Session Topic: Art and Engagement – Developing a Service-Based Approach

**Rebecca Musselman**, the chorus teacher at Seven Springs Middle School, creates musical theatre by combining both the drama and chorus classes. She works with guidance to promote character education skits on topics such as anti-bullying, peaceful conflict resolution and

resisting peer pressure. She also creates stained glass jewelry boxes and loves to cook, swim, walk and read mystery stories.

Session Topic: Middle School Theatre – Making a Dramatic Difference

**Morgan T. Paine** holds an MFA in Painting from the Massachusetts College of Art and a BA in Studio Art from Reed College. Florida Gulf Coast University's Program Leader for Art since 1997, Paine is Interim Gallery Director and Associate Professor of Art. For 13 years he taught art, art history, and experiential learning at Alverno College (Milwaukee) and before that, studio art at Penn State. A practicing painter, he has shown his work in numerous 1-person shows. As the founding member of the Art Program, he helped plan FGCU's \$7.1 million FGCU Art Complex which opened in August 2002.

Session Topic: Art and Engagement – Developing a Service-Based Approach

**DeeDee Rasmussen** became the first full-time Executive Director for Florida Campus Compact in January 2001. DeeDee came to Campus Compact with over 15 years of experience at the highest levels of state government, serving most recently with the Governor and Cabinet as Director of Cabinet Affairs for State Treasurer, now U.S. Senator, Bill Nelson. As Executive Director of Florida Campus Compact, DeeDee works with college and university presidents in Florida to promote the civic purposes of higher education by advancing academically rigorous service-learning, civic engagement, student volunteerism and campus-community collaboration. DeeDee also works with the national Campus Compact organization to implement national support for students, faculty, and community engagement. DeeDee received her Master's and Bachelor's degrees from Florida State University.

***Session Topic: Service-Learning 101 for K-HE***

**Lora Reed** completed her M.A. thesis in Applied Sociology (Community Building and Conflict Management in the Workplace, Vermont College, now Union Institute) by performing service as part of the learning process. Upon receiving her M.A., Lora formed a small sociological consulting firm, Peace Offerings, Inc., based in Bradenton. Engaged in grant writing, training, organizational consulting, and workforce development, Peace Offerings has cooperated with public service agencies, non-profits, academic institutions, and businesses to pilot service learning as a means of community and workforce development. Specifically, the firm has encouraged the use of service learning as a win/win strategy for building students and 21st century communities.

Session Topic: Triangular Relationships Between Service, Learning, and the Arts

**Phyllis Renninger** currently is the Director of Resource Development for Florida Community College at Jacksonville. She was a former Corporation for National Service Fellow, a teacher, school and district-based administrator, education consultant, and Mayor of Orange Park. Prior to her current position, Phyl was the Duval County Schools Supervisor of External Funding where she secured over \$85 million in grant funding. Her other previous experience includes Clay County Schools Grant Development Coordinator, Baker-Clay-Nassau Collaborative Partnership Coordinator, Clay County Shared Services Network Facilitator, and Clay-Baker-Nassau School Readiness Coalition board member. Phyl continues her role as a Florida Learn & Serve State Peer Consultant, state grant reviewer; NAEYC Validator; Lighthouse Learning Center board member; and Orange Park Town Councilwomen (currently the vice-Mayor). Mrs.



Renninger is an Executive Board member and president of the American Association of Grant Professionals, a national organization dedicated to grant professionals across the country.

Session Topic: Grant Development

**Evelyn Robinson** earned a BS from Troy State and a MA from Florida State University. At South Lake High School in Clermont, Florida, she began engaging at-risk students in service learning. Thousands of students have since participated in over 100 service-learning projects. Ms. Robinson is now the Lake County Service-Learning Coordinator, where she trains teachers and students countywide. These students then train teachers and students worldwide, including in Lithuania, Spain, the Caribbean, and Germany. South Lake High was one of the original National Service-Learning Leader Schools and has won 5 Disney Service Awards. Ms. Robinson was named Teacher of the Year twice and has received two Disney Teacherfific Awards. She also received the Florida's Tunic Award for service-learning, and won NYLC's National Servant Leader Practitioner Award.

***Session Topic: Empty Bowls Project***

**Susan Schommer** is an elementary art teacher at Pine Ridge Elementary School. Susan has been involved with service learning for the past six years. Her other duties have included holding the office of president of the Lake Art Educators Association for the past three years and producing a morning news program for the past 10 years. Susan was also the Teacher of the year 2002, formerly a high school teacher for 6 years and presented at Service-Learning and the Arts conference in 2003.

Session Topic: Empty Bowls Project

**Katie Schumm** graduated in May 2004 from Miami University of Ohio with a B.A. in Urban Planning and Geography. In summer of 2003, she led the painting of an outdoor mural for members of a neighborhood garden in downtown Cincinnati, Ohio. The experience sparked her interest in the power of participatory art to build the understanding among diverse groups of people. Katie is currently the Outreach Coordinator for Miami University's Office of Service-Learning and Civic Leadership, where she continues to search for ways to integrate the arts and service learning.

Session Topic: Murals and Service-Learning – Building Community through Participatory Art

**Brian Shaw** holds a masters degree from DePaul University, School for New Learning. Brian is the Associate Chairperson of the Theater Department of Columbia College Chicago, where he teaches acting, physical theater, community-based theater and theater history. He is the departmental representative to the Office of Community Arts Partnerships, and oversees the developing relationship between the Theater Department and community-based organizations. Brian has developed numerous projects that engage students and faculty from Columbia as teachers, artists and administrators in the development of original works of youth theater. Brian is a founding member of Plasticene, a physical theater company devoted to the collaborative creation of new works of physical theater. Plasticene productions have been performed in Chicago at the Athanaeum as part of the PAC/edge Festival, Steppenwolf Studio, Chopin, Viaduct and National Pastime theaters, in New York at Pace University, in North Carolina,

Wisconsin and at the Edinburgh Fringe Festival. Brian is also engaged in international programs, including an exchange with the Academy of Arts of the University of Novi Sad in Serbia.

Session Topic: Reciprocity – Campus & Community Partnerships

**Cynthia Tehan**, a National Board Certified Teacher, has taught at both middle school and high school levels and is currently in her 4th service-learning grant. Cynthia currently teaches drama and French at Seven Springs Middle School in New Port Richey, Florida. She produces plays for the nearby elementary school students and presents two large cast stage productions each year.

Session Topic: Middle School Theatre – Making a Dramatic Difference

**Paul Teruel** is Director of Community Partnerships at the Office of Community Arts Partnerships at Columbia College Chicago. He brings a unique perspective to OCAP, having helped develop OCAP's signature partnership program, Urban Missions, in his previous capacity as co-founder and co-director of Urban Missions partner community-based organization Street-Level Youth Media. A model in the community/media arts field, Street-Level educates youth in media arts and emerging technologies for use in self-expression, communication and social change. Mr. Teruel studied Film and Video at Columbia College and is active in video production for the Mexican Fine Arts Center Museum in Chicago.

Session Topic: Reciprocity – Campus & Community Partnerships

**Terry Thaxton** is Assistant Professor of English at UCF. She holds a Master of Fine Arts in Writing from Vermont College. Her creative work-poetry and prose-has received national recognition. She has more than 35 publications in more than 30 literary journals. Her poetry manuscript has been a finalist or semifinalist in four national poetry competitions, including the T.S. Eliot. She is Poetry Editor for The Florida Review, a nationally recognized literary journal. She has received grants from the Barbara Deming Memorial Fund for Women, Youth Service America, the Florida Humanities Council, and United Arts of Central Florida.

Session Topic: Service Art at the Soup Kitchen

**Dr. Donna M. Trent** is an Assistant Professor of Sociology and Management at Eckerd College. She received her Ph.D. in Sociology from Tulane Graduate School in 1983. She also holds a M.Ed. in Counseling (1974) from the Tulane School of Education and a M.S. in Community Mental Health (1978) from the Tulane School of Public Health and Tropical Medicine. Dr. Trent was appointed an Academy of Management Service-Learning Fellows in 1999-2000. She was invited to Hong Kong Baptist University where she instructed their administration, staff and graduate students on how to institute service-learning within their business school. Donna has been a member of the Florida Campus Compact Advisory Council since 2002. She has developed and instructed traditional and adult college students in service-learning projects both locally and internationally.

Session Topic: Triangular Relationships Between Service, Learning, and the Arts

**Bethany Weber** is currently a senior interdisciplinary major focusing in art and community development at Miami University of Ohio. In the summer of 2004, she worked with K-6 grade Spanish-speaking youth to paint a mural for a community outreach agency in Hamilton, Ohio. She is using this mural project to help guide the writing of her senior thesis, titled,

"Facilitating Community Development Through Mural Art." Bethany works as a Student Service Guide for Miami University's Office of Service-Learning and Civic Leadership.  
Session Topic: Murals and Service-Learning – Building Community through Participatory Art

**Anna West** is a poet, youth advocate and organizer. As the Program Director of Young Chicago Authors, she has innovated youth writing programs in schools and community centers for over seven years. She is the co-chair of Chicago's teen poetry slam and the national teen poetry festival, Brave New Voices. She is a graduate of Columbia College Chicago where she received her B.A. in creative writing. Author of the chapbook of poems, *this without crescendo*, Anna has been a featured reader at venues including Chicago's Guild Complex, Mental Graffiti and Women OutLoud. Her writing explores childbirth and mothering through the lens of the personal and political. She is featured in UR Magazine as one of thirty Chicagoans under the age of thirty who is shaping cultural life in Chicago, bringing her passion for language and youth expression to schools, community centers, shelters, hospitals and the streets.

Session Topic: Reciprocity – Campus & Community Partnerships

### APPENDIX III

#### Conference Participants

First Name	Organization/School Name	E-mail
Susan	Portland State University	agrekis@pdx.edu
Holly	Southside Fundamental Middle School	Holly_Atkins@places@pcsb.org
Kimberly	Pensacola Symphony Orchestra	kbaker@pensacolasymphony.com
Theodore	St. Johns County school District	bantont@stjohns.k12.fl.us
Amy	Murray Middle School	bantona2stjohns.k12.fl.us
Patricia	Schiel	bellamp@cps-k12.org
Lynn	The John and Mable Ringling Museum of Art	lberkowi@ringling.org
Tonya	Lake Superior College & Snoodle Ceramics	tbsmiles64@hotmail.com
Howard	National Service-Learning Exchange	howbowden@aol.com
Dave	Bay High School	mccauca@mail.bay.k12.fl.us
Tammy	Florida Campus Compact	tammy@floridacompact.org
Marylee	SCOPE	mbussard@scopexcel.org
Sheri	Lake City Community College	carders@lakecitycc.edu
Elizabeth	Schiel PS&A	chapmaea@yahoo.com
Min	Florida Learn & Serve	mcho@admin.fsu.edu
Michele	OCPS Alternative Education	cottrim@ocps.net
Nicole	The Ringling Museum of Art	ncrane@ringling.org
Vicky	South Lake High School/Service-Learning	croteauv@lake.k12.fl.us
Virginia	Ringling School of Art and Design	vdemers@ringling.edu
Timothy	Columbia College Chicago	tdensmore@colum.edu
Jeff	St. Augustine high School	doddj@stjohns.k12.fl.us
Julie	Community Education Partners/Emerald Bay Academy	julie.dugosh@communityeducation.com
Elaine	School for Creative and Performing Arts	wolcg@yahoo.com
Lisa	Florida Southern College	lerdman@flsouthern.edu
Cindy	Treadway Elementary	erschc@comcast.net
Patricia	Florida Gulf Coast University	pfay@fgcu.edu
Marino	Valencia Community College	mfernandez29@earthlink.net
Anna	FIU	tangolim162000@yahoo.com
Joe	Florida Learn & Serve	jfollman@admin.fsu.edu
Joy	School for Creative and Performing Arts	joy@fuse.net



Daniel	ArtSouth	JKlein-Young@dadeschools.net
Fred	Bay High School	mccauca@mail.bay.k12.fl.us
Paula	Florida Learn & Serve	pgray@admin.fsu.edu
Suzanne	SCOPE	sgregory@scopexcel.org
Larry	Lake City Community College	GUNTERL@LAKECITYCC.EDU
Virginia	Tropical Elementary	hamiltonv@brevard.k12.fl.us
Dana	Rollins College	dhargorve@rollins.edu
Beatriz	Miami Douglas MacArthur Senior High School-South	BHerrmann@dadeschools.net
Bethany	Schiel Primary School For Arts Enrichment	Hertzib@cps-k12.org
Bob	Florida Int'l University	rhogner@fiu.edu
Youngbok	Herron School of Art	youhong@iupui.edu
Charles	Barbara Goleman Senior High	chumes29@aol.com
Karen	Community Arts in Schools	karen_hutzel@wcet.pbs.org
Meg	Florida Campus Compact	meg@floridacompact.org
Judi	USF Collaborative for Children, Families & Communities	jetson@usfcollab.usf.edu
Ron	University of South Florida	ronjones@arts.usf.eud
Linda	Southside Fundamental Middle School	Linda_Kenefick@places.pcsb.org
Mary	Schiel PSAE	mek2758@hotmail.com
Cheryl	Institute for Learning Innovation	kessler@ilinet.org
Natalie	Bayside High School	keyesn@pcsb.org
Joo	University of Central Florida	jkim@mail.ucf.edu
Sue	Florida State University	wkgdc@hotmail.com
Jon	Miami-Dade College	Jon.Kitner@mdc.edu
Janis	Miami Douglas MacArthur Senior High School-South	JKlein-Young@dadeschools.net
Stacy	Schiel Primary School for Arts Enrichment	skloth@adelphia.net
Dawn	J. Colin English	dawnml@lee.k12.fl.us
Barton	University of South Florida/ Col. of Visual & Performing Arts	blee@arts.usf.edu
Rachel	Ringling School of Art and Design	rlevey@ringling.edu
Sally	Clermont Middle School	loebbs@lake.k12.fl.us
April	Florida Campus Compact	april@floridacompact.org
Yassamin		ymaleknasr@yahoo.com
Sonia	California College of the Arts	smanjon@cca.edu
Carmen	J. Colin English	carmen3@lee.k12.fl.us
Anita	Southside Fundamental Middle School	Anita_Marshall@places.pcsb.org

Cari	Jacksonville University - Dept. of Dance	cmartin2@ju.edu
Katie	Rockledge High School	mrsmatthews@cfl.rr.com
Tabitha	Columbia College's Office of Community Arts Partnerships	tmatthews@colum.edu
Cheryl	South Lake High School	mcleanc@lake.k12.fl.us
Megan	Florida Gulf Coast University	mmcshane@fgcu.edu
Bill	Florida State University	bmoeller@admin.fsu.edu
Kelly	Ringling School of Art and Design	kmoselle@ringling.edu
Victoria	Harry Schwettman Education Center	vmudry@pasco.k12.fl.us
Thomas	Pinellas County School District	murrayt@pcsb.org
Rebecca	Seven Springs Middle School	rmusselm@pasco.k12.fl.us
Teresa	Community Education Partners	t.oquendo@communityeducation.com
Morgan	Florida Gulf Coast University	mpaine@fgcu.edu
Christy	Lakeland Senior High School	christy.paris@polk-fl.net
Brent	Florida State University	bp03@fsu.edu
Jacqui	SCPA	j_phlipot@hotmail.com
Al	Trafalgar Middle School	piotteral@aol.com
Suzi	Volusia County Schools	spreston@mail.volusia.k12.fl.us
Carmen		
Jonelle	Florida State University	jprillart@aol.com
Deedee	Florida Campus Compact	ddr@floridacompact.org
Lora	Eckerd College	lreed7@tampabayrr.com
Kezia	Wilkinson Junior High School	klplummer@mail.clay.k12.fl.us
Phyllis	Florida Community College at Jacksonville	prenning@fccj.edu
Evelyn	Lake Couny Schools	robinsone@lake.k12.fl.us
Mary Jo	University of Central Florida	mross@mail.ucf.edu
Belinda	South Lake High School	russobel@lake.k12.fl.us
Bonnie	School for Creative and Performing Arts (SCPA)	brye@scpa.org
Shanti	Cultural Council of Indian River County	journeytothearts@yahoo.com
Susan	Pine Ridge Elementary School	schommers@lake.k12.fl.us
Katie	Miami University	schummkm@muohio.edu
Doris	J. Colin English	dorisrs@lee.k12.fl.us
Brian	Columbia College Chicago	bshaw@colum.edu
Rachel	Rollins College	rsimmons@rollins.edu
Jane	Schiel Primary School for Arts Enrichment	simonja@cpsboe.k12.oh.us

Shauna	Tallahassee Community College	smiths@tcc.fl.edu
Jose	Community Education Partners	jose.sostre@communityeducation.com
Lynn	FASS VSITA	ltaff@admin.fsu.edu
Cynthia	Seven Springs Middle School	ctehan@mac.com
Sheryl	J. Colin English	sthom51259@earthlink.net
Paul	Columbia College Chicago's Office of Community Arts Partnerships	pteruel@colum.edu
Terry	University of Central Florida	tthaxton@mail.ucf.edu
Jennifer	Expressions Learning Arts Academy	jtragash@bellsouth.net
Gail	Leesburg Elementary School	WoolaTy@k12.lake.fl.us.
Cheryl	Expressions Learning Arts Academy	Express@TLC2000.net
Bethany	Miami University	weberbh@muohio.edu
Anna	Young Chicago Authors	anna@youngchicagoauthors.org
Margaret Anne	Polk County School Board/Community Relations	margaret.wheeler@polk-fl.net
Donna	VSA Arts of Florida	topformdrw@aol.com
Taurean	National Conference for Community & Justice	wongrhythm0@hotmail.com

## **APPENDIX IV**

### **Participant Reflection Poems**

Learn to create  
Create to learn  
Learn to Serve  
Serve to learn  
Ohio.

From our hearts to hand  
Throughout our lands  
We have now the yearnings  
For service learning

We cared  
We shared  
We opened our eyes  
And what did we see?  
Our experiences reflecting back on me

Creativity is catching  
Eyes open in new directions  
A time to share  
Multiple intelligences  
Taking the ordinary to extraordinary

We are all connected  
Through a foundation of learning  
Events, meeting, listening  
Sharing, watching  
Hoping  
Changing event  
We are all looking  
For educational &  
Personal growth.

Artists can  
create and  
agitate for community  
It's a tumble  
into our work and lives  
Brian gives Tabitha a look